

Swaziland News Flash!

Alert readers of the FMF Stamp Blog will remember that the Swaziland essay posted yesterday was so late because of the wait for a quite common stamp — the 1d of the Queen Elizabeth definitive set of 1956.

To recap briefly: I did purchase one of the stamps online, but the seller accidentally sent me the 1/2d instead of the 1d. I sent it back with an amiable note — asking him to send me the 1d in place of the 1/2d, if he has it in stock. “No word at press time,” I wrote yesterday. “I am aching to complete the set.”

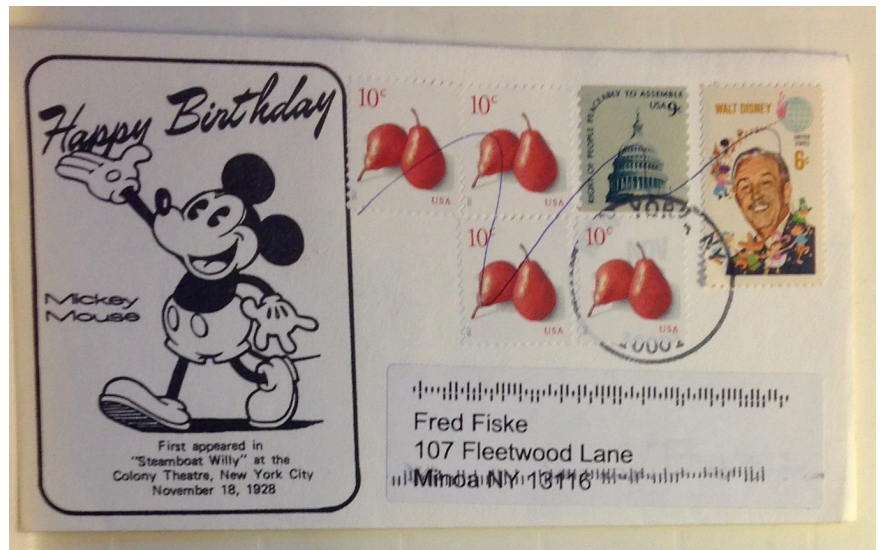


Here is a picture of the 1/2d, which I include for no particular reason, except that it's a superficially pretty stamp — until you learn it's a picture of an asbestos mine. Yikes!



My Swaziland essay posted yesterday included a picture of the set on my album page. The missing 1d is conspicuous, don't you think? (see left) My self-imposed deadline of one FMF Stamp Project essay per month meant that I had only hours to upload November's post. My post went up, and the wait continued ...

But not for long! The very next day — today — an envelope was waiting in the mail from the seller, who obligingly exchanged the 1/2d sent to me in error for a bright, mint, never-hinged example of the 1d stamp. (He also included a perfectly good mint Forever stamp for good measure. Good deal!)



Here it is in all its glory. Isn't it a beauty? The serene, calming view; the contrasting colors; the elegant design ...

It is, therefore, with not inconsiderable pride and satisfaction that I present to you, in conclusion, the one and only Swaziland Elizabeth II definitive set of 1956 — complete!

ISSUES OF 1953-56



'21 COMPL NH



NH

11



NH



NH



5.75 + 2H 19



'19 NH 3.25



'20



13. - 120
NH (197-325)

THE FMF
STAMP
PROJECT
CONTINUES